

AP MORGAN



Trefoil Gardens, Amblecote, Stourbridge
£950 per month

Features:

- Two double bedroom second storey apartment
- Large lounge/diner
- Ensuite shower room
- Juliette balcony
- Allocated gated parking
- Close to Stourbridge town centre
- EPC - B

Description:

This contemporary two double bedroom second-floor apartment, conveniently located near Stourbridge Town Centre. Additionally, it includes an allocated parking space within a secure gated internal courtyard and boasts a corner position with two generously sized double bedrooms and a charming Juliette balcony.

The layout comprises an entrance hallway, a spacious lounge/diner with Juliette balcony over looking the front gardens and the surrounding town, a well-appointed kitchen, two double bedrooms, with the master bedroom featuring an en-suite shower room, and a family bathroom for added convenience.

Details:

Entrance Hall

Lounge/Diner 20' x 12'8" (6.1m x 3.86m)

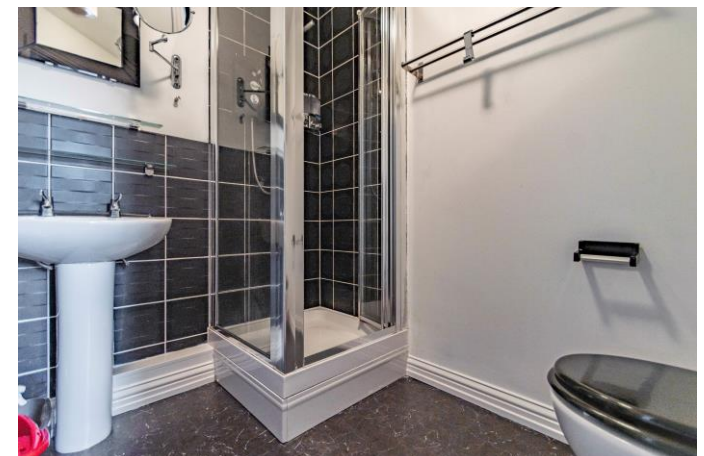
Kitchen 5'11" x 13'3" (1.8m x 4.04m)

Master bedroom 10'3" x 13'3" (3.12m x 4.04m)

En-suite 6'3" x 5'7" (1.9m x 1.7m)

Bedroom Two 14'11" x 7'2" (4.55m x 2.18m)

Bathroom 6'8" x 5'6" (2.03m x 1.68m)



EPC Rating: To be confirmed

Council Tax Band: A (tbc by solicitors).

Tenure: To be advised (tbc by solicitors).

For more information or to arrange a viewing, please call us on 01384 319 400.



How can we help you?

Need a mortgage?

We recommend Wiser Mortgage Advice. They will search the market for you to ensure you get the right lender and mortgage deal. They typically achieve mortgage offers much more quickly than if you were dealing with lenders directly.

The initial appointment is free and without obligation. Call us on 01384 319 400, or visit their website for more information: www.wisermortgageadvice.co.uk

Property to sell?

If you need to sell a property in order to buy, you ideally need to be on the market at least (and preferably Sold STC) before viewing, otherwise you may lose out to other buyers when the right property comes along. In these circumstances we can get your property 'live' quickly. Just book a free valuation and we will visit your property and discuss your needs.

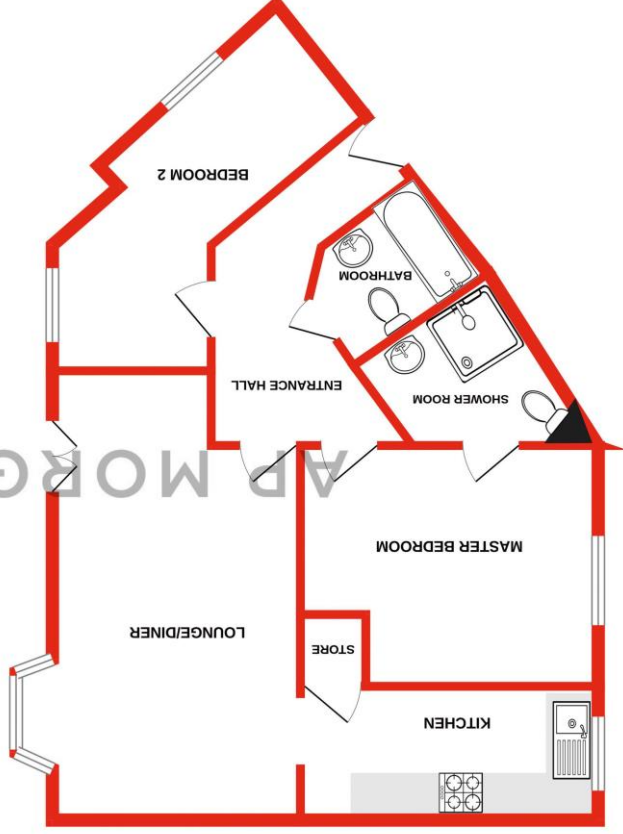
Need a solicitor?

A good solicitor can save you literally weeks of time in the buying/selling process, reducing the stress levels of all involved. We will instruct a reputable firm that is competitive on cost and very reliable. Just ask for a quote.

Need a removal company and storage?

A professional removal company takes the stress out of moving, knowing that your belongings are safe and insured far outweighs any small savings by trying to do it yourself or using a man-and-a-van service. We work closely with and recommend Cube Removals as the leading local firm. For peace of mind and a reliable service call them on 0800 193 0000 or visit their website, cuberemovals.co.uk, to arrange a survey.

SECOND FLOOR (65.4 sq.m.) approx.
704 sq.ft. (65.4 sq.m.) approx.



TOTAL FLOOR AREA: 704 sq.ft. (65.4 sq.m.) approx.
What every attempt has been made to ensure the accuracy of the dimensions indicated here. Measurements of doors, windows, cornices and any other items are approximate and no responsibility is taken for any errors, omission or mis-statement. This plan is an illustrative proposal only and should not be used as such by any prospective purchaser. The services, systems and appliances shown here are not intended and no guarantee as to their operability or efficiency can be given.
Made with AutoCAD 2023

No statement in these details is to be relied upon as representation of fact, and purchasers should satisfy themselves by inspection or otherwise as to the accuracy of the statements contained within. These details do not constitute any part of any offer or contract. AP Morgan and their employees and agents do not have any authority to give any warranty or representation whatsoever in respect of this property. These details and all statements herein are provided without any responsibility on the part of AP Morgan or the vendors. Equipment: AP Morgan has not tested the equipment or central heating system mentioned in these particulars and the purchasers are advised to satisfy themselves as to the working order and condition. Measurements: Great care is taken when measuring, but measurements should not be relied upon for ordering carpets, equipment, etc. The Laws of Copyright protect this material. AP Morgan is the Owner of the copyright. This property sheet forms part of our database and is protected by the database right and copyright laws. No unauthorised copying or distribution without permission.